



May 6, 2009

Recreation trails mapped out electronically

*Edmonton...*A new electronic map will help Albertans find out exactly where they are while enjoying recreational activities in the Ghost Forest Land Use Zone (FLUZ).

The geo-referenced map of the Ghost FLUZ is a user-friendly orientation tool that can be used on some handheld global positioning systems. The map shows the user's location in relation to the designated trail system and indicates the permitted recreational uses within the Ghost FLUZ. It is available for download at www.srd.alberta.ca.

"We encourage people to enjoy Alberta's public lands," said Minister of Sustainable Resource Development Ted Morton. "But at the same time, we need to educate Albertans about the trails they can and cannot use in order to protect sensitive areas and reduce conflict with other land uses."

The Ghost FLUZ geo-referenced map provides:

- an accurate depiction of trails and their permitted uses;
- designated campgrounds;
- areas where random camping is not permitted;
- elevation contours;
- highways and roads; and
- lakes and streams.

This map is the first product of its kind developed by Sustainable Resource Development.

Currently, the map is available for use on Garmin GPS units.

The Ghost FLUZ mapping project is part of the Alberta government's efforts to promote responsible recreation on public lands and another key element to implement the Ghost Waiparous Operational Access Management Plan. For more information about this project or to download the map, visit www.srd.alberta.ca.

Backgrounder attached: Ghost FLUZ map

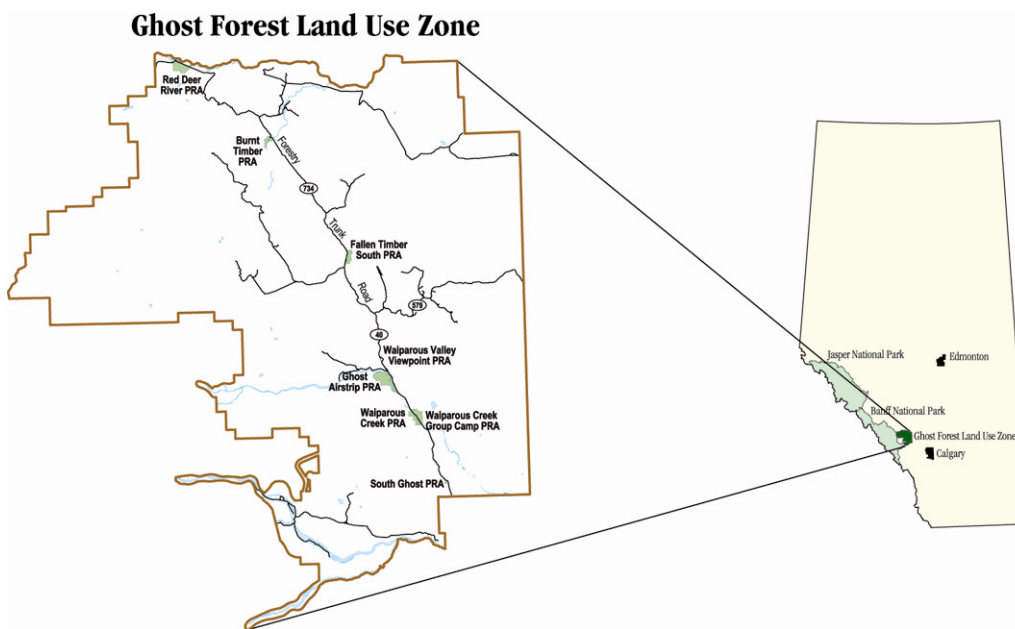
Media inquiries may be directed to:

Kathy Kiel
Public Affairs Officer
Sustainable Resource Development
780-427-8636
Kathy.kiel@gov.ab.ca

To call toll-free within Alberta dial 310-0000.

May 6, 2009

Map of Ghost Forest Land Use Zone



Ghost Forest Land Use Zone (FLUZ)

The Ghost FLUZ is located about 80 kilometres northwest of Calgary and includes more than 1,500 square kilometres of public land east of Banff National Park and Don Getty Wildland Provincial Park. There are a number of activities in the Forest Land Use Area including forestry, oil and gas, grazing and recreational activities. The area is managed under the authority of the *Forest Act* to protect the environment while allowing responsible and sustainable use of the land.

The geo-referenced map is compatible with Garmin GPS products. Users should ensure they have the appropriate hardware and software before downloading the map. A hard copy of the Ghost FLUZ brochure should also be used to ensure responsible recreation in the area.

For more information, please visit www.srd.gov.ab.ca/fieldoffices/southernrockies/ghostwaiparous.

To download the electronic map, please visit www.srd.alberta.ca.